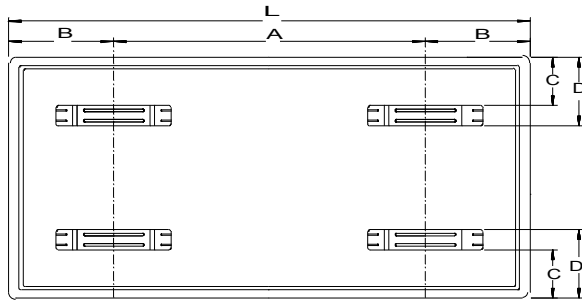
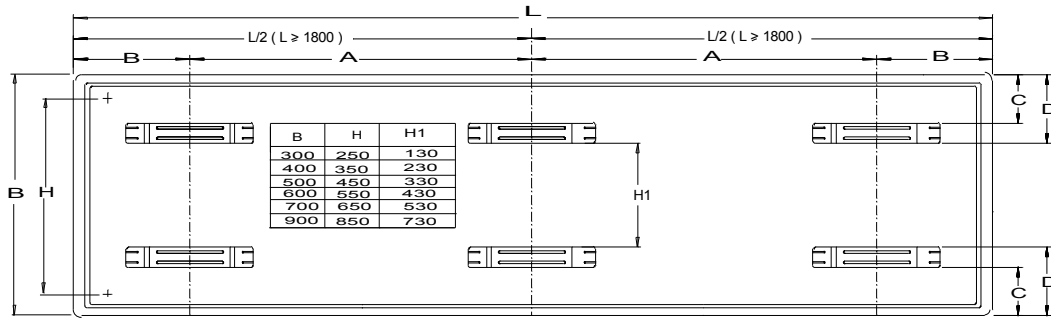
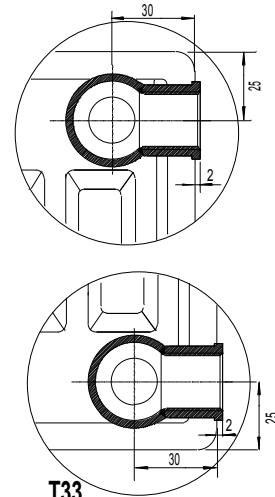
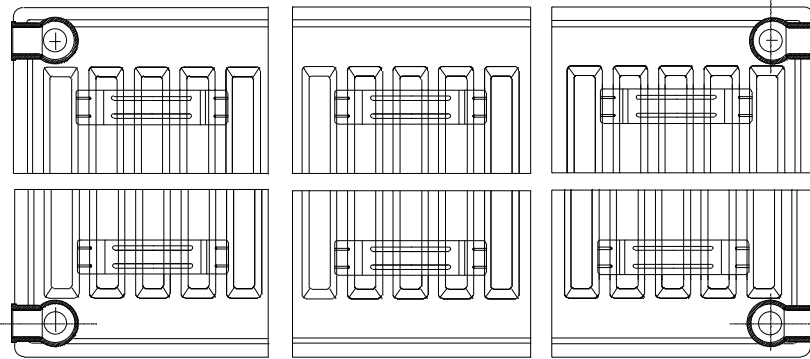


# COMPACT - 4



L RAD.LENGTH	POSITION OF THE MOUNTING STRIPS						Set of lugs
	A (mm)		B (mm)		C (mm)	D (mm)	
	11 Type	21-22-33 Type	11 Tip	21-22-33 Type			
400	170	200	115	100	60	85	2
500	270	300	115	100	60	85	2
600	370	400	115	100	60	85	2
700	470	500	115	100	60	85	2
800	570	600	115	100	60	85	2
900	670	700	115	100	60	85	2
1000	770	800	115	100	60	85	2
1100	870	900	115	100	60	85	2
1200	970	1000	115	100	60	85	2
1400	1170	1200	115	100	60	85	2
1600	1370	1400	115	100	60	85	2
1800	785	800	115	100	60	85	3
2000	885	900	115	100	60	85	3
2200	985	1000	115	100	60	85	3
2400	1085	1100	115	100	60	85	3
2600	1185	1200	115	100	60	85	3
2700	1235	1250	115	100	60	85	3
2800	1285	1300	115	100	60	85	3
3000	1385	1400	115	100	60	85	3



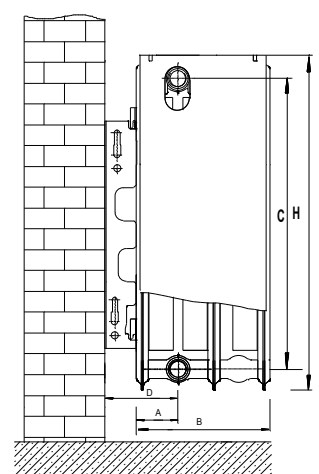
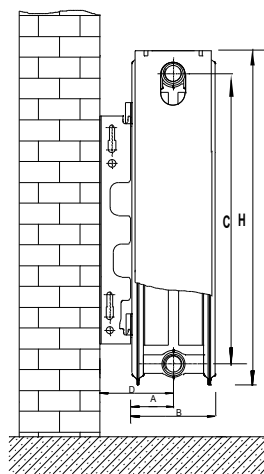
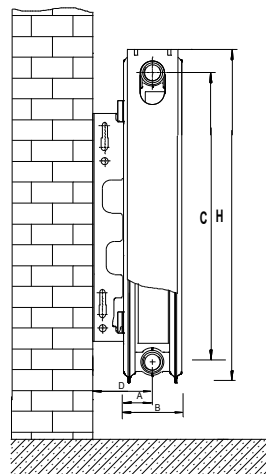
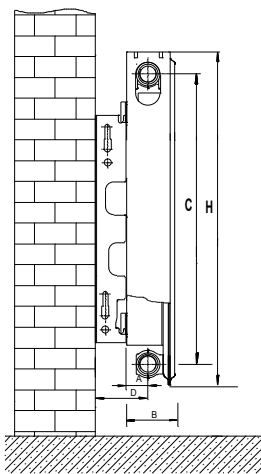
## COMPACT - 4

T 11

T 21

T 22

T 33



A=29,6  
B=61  
C=H-50  
D=71 / 56,5

A=38,5  
B=77  
C=H-50  
D=80 / 65,5

A=50  
B=100  
C=H-50  
D=92,5 / 78

A=50  
B=160  
C=H-50  
D=92,5 / 78

D=Distance at fixation on the short (23mm) or long (37,5mm) side of the L bracket  
(Anti-lift brackets can only be used at the long side of the L- bracket)